

## Product Datasheet



### Mouse Anti-Human CD13 (Aminopeptidase N)

#### Overview

<b>Product number</b>	<b>PDZMM102</b>
<b>Host species</b>	Mouse
<b>Target species</b>	Human
<b>Suitable for:</b>	IHC-P, WB, ELISA, Immunomicroscopy, Dot blot, ICC, IHC-Fr
<b>Immunogen</b>	A KLH-conjugated synthetic peptide derived from human CD13 protein was used for immunization.

**Conjugation** Unconjugated

#### Properties

**Form** Liquid

**Storage instructions** Shipped at 4 °C. Store at -20 °C. Avoid freeze/thaw cycle. Please see notes section.

**Storage buffer** Phosphate buffered saline pH 7.4, contains stabilizer and ≤0.09% sodium azide.

**Purity** Immunogen affinity or SpG purified

**Purification notes** This product was prepared by immunoaffinity chromatography using immunogen peptide coupled to Sepharose 4B.

**Conjugation notes** -

**Clonality** Monoclonal

**Isotype** IgG

**General notes** For extended storage aliquot contents and freeze at -20 °C or below. Centrifuge product if not completely clear after standing at room temperature. This product is stable for several weeks at 4 °C as an undiluted liquid. Dilute only prior to immediate use. Our customer's feedback says the antibody worked great. If in case the antibody fails to give results then please contact our scientific support team for assistance.

## Applications

The application notes include recommended starting dilutions; optimal dilutions/concentrations should be determined by the end-user.

### Product Usage Information:

#### Application Dilutions

Western Blotting	3-5 ug/ml
Immunohistochemistry (Paraffin)	5-10 ug/ml
Immunohistochemistry (Frozen)	5-10 ug/ml
Immunofluorescence	5-10 ug/ml
Flow Cytometry	5-10 ug/ml

**Please note:** All products are "FOR RESEARCH USE ONLY. NOT FOR USE IN DIAGNOSTIC PROCEDURES"

#### Background:

Aminopeptidase N is located in the small-intestinal and renal microvillar membrane, and also in other plasma membranes. In the small intestine aminopeptidase N plays a role in the final digestion of peptides generated from hydrolysis of proteins by gastric and pancreatic proteases. Its function in proximal tubular epithelial cells and other cell types is less clear. The large extracellular carboxyterminal domain contains a pentapeptide consensus sequence characteristic of members of the zinc-binding metalloproteinase superfamily. Sequence comparisons with known enzymes of this class showed that CD13 and aminopeptidase N are identical.

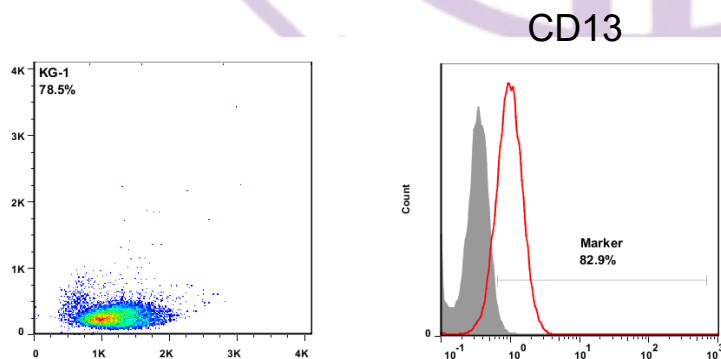
#### Storage

Supplied in 10 mM sodium HEPES (pH 7.5), 150 mM NaCl, 100 µg/ml BSA and 50% glycerol. Store at –20°C. After receiving aliquot the antibody and store at –20°C.

#### Terms and conditions

Guarantee only valid for products bought direct from PADZA or one of our authorized distributors

#### References:



Note: This product has originally been developed at Avicenna Research Institute, Tehran, IRAN and assigned to PADZA Company according to contract 98/15/191 dated 98/01/10.