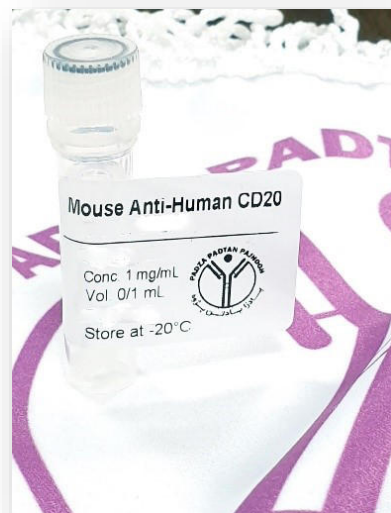


Product Datasheet



Mouse Anti-Human CD20

Overview

Product number	PDZMM103
Host species	Mouse
Target species	Human
Suitable for:	IHC-P, WB, ELISA, Immunomicroscopy, Dot blot, ICC, IHC-Fr
Immunogen	A KLH-conjugated synthetic peptide derived from human CD20 protein was used for immunization.

Conjugation Unconjugated

Properties

Form Liquid

Storage instructions Shipped at 4 °C. Store at -20 °C. Avoid freeze/thaw cycle. Please see notes section.

Storage buffer Phosphate buffered saline pH 7.4, contains stabilizer and ≤0.09% sodium azide.

Purity SpG purified

Purification notes This product was prepared by immunoaffinity chromatography using protein G coupled to Sepharose 4B.

Conjugation notes -

Clonality Monoclonal

Isotype IgG

General notes For extended storage aliquot contents and freeze at -20 °C or below. Centrifuge product if not completely clear after standing at room temperature. This product is stable for several weeks at 4 °C as an undiluted liquid. Dilute only prior to immediate use.

Our customer's feedback says the antibody worked great. If in case the antibody fails to give results then please contact our scientific support team for assistance.

Applications

The application notes include recommended starting dilutions; optimal dilutions/concentrations should be determined by the end-user.

Product Usage Information:

Application Dilutions

Western Blotting	3-5 ug/ml
Immunohistochemistry (Paraffin)	5-10 ug/ml
Immunohistochemistry (Frozen)	5-10 ug/ml
Immunofluorescence	5-10 ug/ml
Flow Cytometry	5-10 ug/ml

Please note: All products are "FOR RESEARCH USE ONLY. NOT FOR USE IN DIAGNOSTIC PROCEDURES"

Background:

CD20 is a protein that is expressed on the surface of B cells, starting at the pre-B cell stage and also on mature B cells in the bone marrow and in the periphery. **CD20** is not expressed on hematopoietic stem cells, pro-B cells, or normal plasma cells.

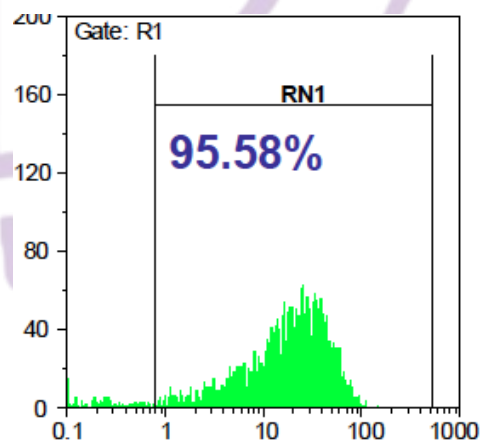
Supplied in 10 mM sodium HEPES (pH 7.5), 150 mM NaCl, 100 µg/ml BSA and 50% glycerol. Store at -20°C. After receiving aliquot the antibody and store at -20°C.

Terms and conditions

Guarantee only valid for products bought direct from PADZA or one of our authorized distributors

References:

Burkitt's lymphoma (Raji)



Note: This product has originally been developed at Avicenna Research Institute, Tehran, IRAN and assigned to PADZA Company according to contract 98/15/191dated 98/01/10.