

## Product Datasheet



### Mouse Anti-Human Ror2

#### Overview

<b>Product number</b>	<b>PDZMM120</b>
<b>Host species</b>	Mouse
<b>Target species</b>	Human
<b>Suitable for:</b>	IHC-P, WB, ELISA, Immunomicroscopy, Dot blot, ICC, IHC-Fr

**Immunogen** A KLH-conjugated synthetic peptide derived from human Ror2 protein was used for immunization.

**Conjugation** Unconjugated

#### Properties

**Form** Liquid

**Storage instructions** Shipped at 4 °C. Store at -20 °C. Avoid freeze/thaw cycle. Please see notes section.

**Storage buffer** Phosphate buffered saline pH 7.4, contains stabilizer and ≤0.09% sodium azide.

**Purity** immunogen affinity or SpG purified

**Purification notes** This product was prepared by immunoaffinity chromatography using immunogen peptide coupled to Sepharose 4B.

**Conjugation notes** -

**Clonality** Monoclonal

**Isotype** IgG

**General notes** For extended storage aliquot contents and freeze at -20 °C or below. Centrifuge product if not completely clear after standing at room temperature. This product

is stable for several weeks at 4 °C as an undiluted liquid. Dilute only prior to immediate use.

Our customer's feedback says the antibody worked great. If in case the antibody fails to give results then please contact our scientific support team for assistance.

## Applications

The application notes include recommended starting dilutions; optimal dilutions/concentrations should be determined by the end-user.

### Product Usage Information:

#### Application Dilutions

Western Blotting	3-5 ug/ml
Immunohistochemistry (Paraffin)	5-10 ug/ml
Immunohistochemistry (Frozen)	5-10 ug/ml
Immunofluorescence	5-10 ug/ml
Flow Cytometry	5-10 ug/ml

**Please note:** All products are "FOR RESEARCH USE ONLY. NOT FOR USE IN DIAGNOSTIC PROCEDURES"

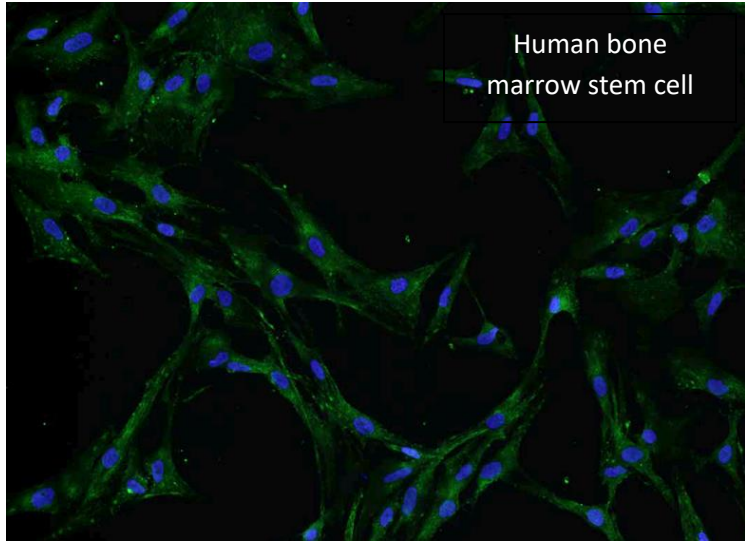
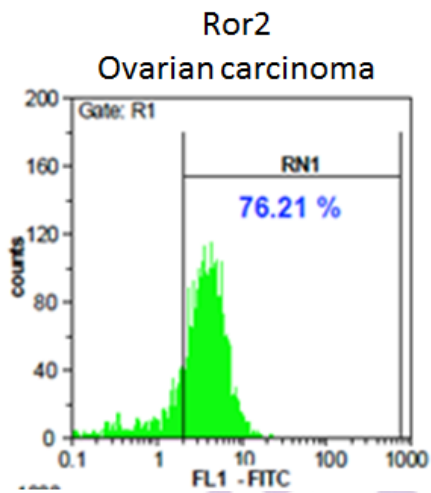
#### Background:

Tyrosine-protein kinase transmembrane receptor ROR2 also known as neurotrophic tyrosine kinase, receptor-related 2, is a protein that in humans is encoded by the ROR2 gene located on position 9 of the long arm of chromosome 9. This protein is responsible for aspects of bone and cartilage growth. It is involved in Robinow syndrome and autosomal dominant brachydactyly type B. ROR2 is a member of the receptor tyrosine kinase-like orphan receptor (ROR) family.

Supplied in 10 mM sodium HEPES (pH 7.5), 150 mM NaCl, 100 µg/ml BSA and 50% glycerol. Store at –20°C. After receiving aliquot the antibody and store at –20°C.

#### Terms and conditions

Guarantee only valid for products bought direct from PADZA or one of our authorized distributors



Note: This product has originally been developed at Avicenna Research Institute, Tehran, IRAN and assigned to PADZA Company according to contract 98/15/191dated 98/01/10.