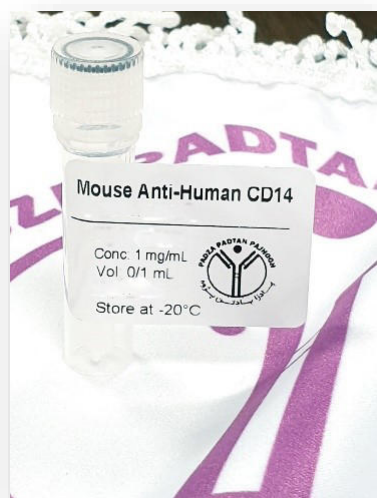


## Product Datasheet



### Mouse Anti-Human CD14

#### Overview

**Product number** PDZMM101

**Host species** Mouse

**Target species** Human

**Suitable for:** IHC-P, WB, ELISA,  
Immunomicroscopy, Dot blot, ICC, IHC-Fr

**Immunogen** A KLH-conjugated synthetic peptide derived from human CD14 protein was used for immunization.

**Conjugation** Unconjugated

---

#### Properties

**Form** Liquid

**Storage instructions** Shipped at 4 °C. Store at -20 °C. Avoid freeze/thaw cycle. Please see notes section.

**Storage buffer** Phosphate buffered saline pH 7.4, contains stabilizer and ≤0.09% sodium azide.

**Purity** SpG purified

**Purification notes** This product was prepared by immunoaffinity chromatography using protein G coupled to Sepharose 4B.

**Conjugation notes** -

**Clonality** Monoclonal

**Isotype** IgG

**General notes**

For extended storage aliquot contents and freeze at -20 °C or below. Centrifuge product if not completely clear after standing at room temperature. This product is stable for several weeks at 4 °C as an undiluted liquid. Dilute only prior to immediate use.

Our customer's feedback says the antibody worked great. If in case the antibody fails to give results then please contact our scientific support team for assistance.

## Applications

The application notes include recommended starting dilutions; optimal dilutions/concentrations should be determined by the end-user.

### Product Usage Information:

#### Application Dilutions

Western Blotting	3-5 ug/ml
Immunohistochemistry (Paraffin)	5-10 ug/ml
Immunohistochemistry (Frozen)	5-10 ug/ml
Immunofluorescence	5-10 ug/ml
Flow Cytometry	5-10 ug/ml

**Please note:** All products are "FOR RESEARCH USE ONLY. NOT FOR USE IN DIAGNOSTIC PROCEDURES"

#### Background:

CD14 (cluster of differentiation 14) is a human protein made mostly by macrophages as part of the innate immune system. It helps to detect bacteria in the body by binding lipopolysaccharide (LPS), a pathogen-associated molecular pattern (PAMP).

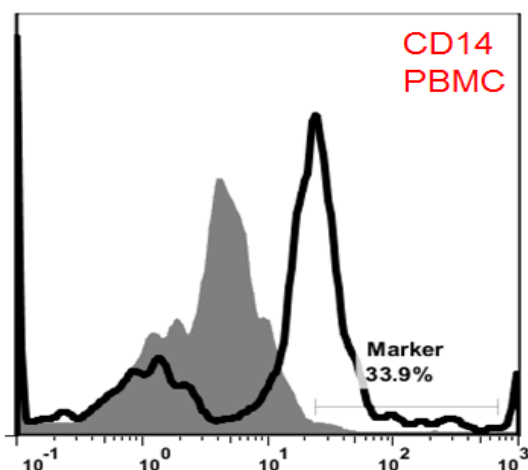
CD14 exists in two forms, one anchored to the membrane by a glycosylphosphatidylinositol (GPI) tail (mCD14), the other a soluble form (sCD14). Soluble CD14 either appears after shedding of mCD14 (48 kDa) or is directly secreted from intracellular vesicles (56 kDa).

Supplied in 10 mM sodium HEPES (pH 7.5), 150 mM NaCl, 100 µg/ml BSA and 50% glycerol. Store at –20°C. After receiving aliquot the antibody and store at –20°C.

#### Terms and conditions

Guarantee only valid for products bought direct from PADZA or one of our authorized distributors

#### References:



Note: This product has originally been developed at Avicenna Research Institute, Tehran, IRAN and assigned to PADZA Company according to contract 98/15/191dated 98/01/10.