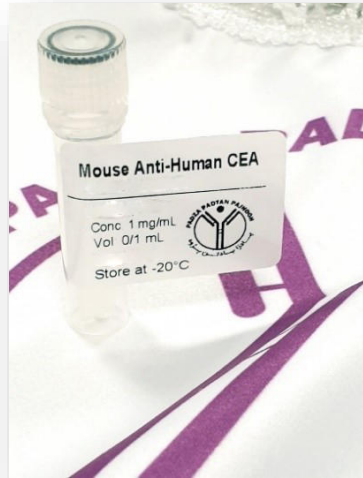


## Product Datasheet



### Mouse Anti-Human CEA

#### Overview

<b>Product number</b>	<b>PDZMM118</b>
<b>Host species</b>	Mouse
<b>Target species</b>	Human
<b>Suitable for:</b>	IHC-P, WB, ELISA, Immunomicroscopy, Dot blot, ICC, IHC-Fr
<b>Immunogen</b>	A KLH-conjugated synthetic peptide derived from human CEA protein was used for immunization.

**Conjugation** Unconjugated

#### Properties

**Form** Liquid

**Storage instructions** Shipped at 4 °C. Store at -20 °C. Avoid freeze/thaw cycle. Please see notes section.

**Storage buffer** Phosphate buffered saline pH 7.4, contains stabilizer and  $\leq 0.09\%$  sodium azide.

**Purity** immunogen affinity or SpG purified

**Purification notes** This product was prepared by immunoaffinity chromatography using immunogen peptide coupled to Sepharose 4B.

**Conjugation notes** -

**Clonality** Monoclonal

**Isotype** IgG

**General notes** For extended storage aliquot contents and freeze at -20 °C or below. Centrifuge product if not completely clear after standing at room temperature. This product is stable for several weeks at 4 °C as an undiluted liquid. Dilute only prior to immediate use.

Our customer's feedback says the antibody worked great. In case the antibody fails to give results then please contact our scientific support team for assistance.

## Applications

The application notes include recommended starting dilutions; optimal dilutions/concentrations should be determined by the end-user.

### Product Usage Information:

#### Application Dilutions

Western Blotting	3-5 ug/ml
Immunohistochemistry (Paraffin)	5-10 ug/ml
Immunohistochemistry (Frozen)	5-10 ug/ml
Immunofluorescence	5-10 ug/ml
Flow Cytometry	5-10 ug/ml

**Please note:** All products are "FOR RESEARCH USE ONLY. NOT FOR USE IN DIAGNOSTIC PROCEDURES"

#### Background:

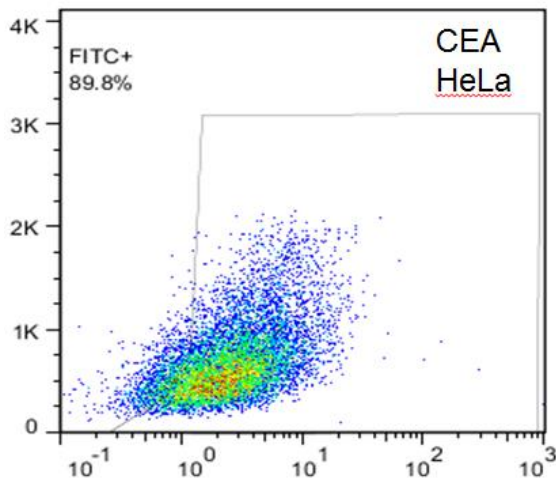
Carcinoembryonic antigen (CEA) describes a set of highly related glycoproteins involved in cell adhesion. CEA is normally produced in gastrointestinal tissue during fetal development, but the production stops before birth. Consequently, CEA is usually present at very low levels in the blood of healthy adults (about 2-4 ng/mL). However, the serum levels are raised in some types of cancer, which means that it can be used as a tumor marker in clinical tests.

Supplied in 10 mM sodium HEPES (pH 7.5), 150 mM NaCl, 100 µg/ml BSA and 50% glycerol. Store at -20°C. After receiving aliquot the antibody and store at -20°C.

#### Terms and conditions

Guarantee only valid for products bought direct from PADZA or one of our authorized distributors

#### References:



Note: This product has originally been developed at Avicenna Research Institute, Tehran, IRAN and assigned to PADZA Company according to contract 98/15/191dated 98/01/10.