

Product Datasheet



Mouse Anti-Human Her2 (ERBB2)



Overview

Product number PDZMM117

Host species Mouse

Target species Human

Suitable for: IHC-P, WB, ELISA, Immunomicroscopy,
Dot blot, ICC, IHC-Fr

Immunogen A KLH-conjugated synthetic peptide derived from human ERBB2 (Her2) protein was used for immunization.

Conjugation Unconjugated

Properties

Form Liquid

Storage instructions Shipped at 4 °C. Store at -20 °C. Avoid freeze/thaw cycle. Please see notes section.

Storage buffer Phosphate buffered saline pH 7.4, contains stabilizer and $\leq 0.09\%$ sodium azide.

Purity immunogen affinity or SpG purified

Purification notes This product was prepared by immunoaffinity chromatography using immunogen peptide coupled to Sepharose 4B.

Conjugation notes -

Clonality Monoclonal

Isotype IgG

General notes For extended storage aliquot contents and freeze at -20 °C or below. Centrifuge product if not completely clear after standing at room temperature. This product is stable for several weeks at 4 °C as an undiluted liquid. Dilute only prior to immediate use. Our customer's feedback says the antibody worked great. If in case the antibody fails to give results then please contact our scientific support team for assistance.

Applications

The application notes include recommended starting dilutions; optimal dilutions/concentrations should be determined by the end-user.

Product Usage Information:

Application Dilutions

Western Blotting	3-5 ug/ml
Immunohistochemistry (Paraffin)	5-10 ug/ml
Immunohistochemistry (Frozen)	5-10 ug/ml
Immunofluorescence	5-10 ug/ml
Flow Cytometry	5-10 ug/ml

Please note: All products are "FOR RESEARCH USE ONLY. NOT FOR USE IN DIAGNOSTIC PROCEDURES"

Background:

Receptor tyrosine-protein kinase erbB-2, also known as CD340 (cluster of differentiation 340), proto-oncogene Neu, Erbb2 (rodent), or ERBB2 (human), is a protein that in humans is encoded by the ERBB2 gene. ERBB is abbreviated from erythroblastic oncogene B, a gene isolated from avian genome. It is also frequently called HER2 (from human epidermal growth factor receptor 2) or HER2/neu.

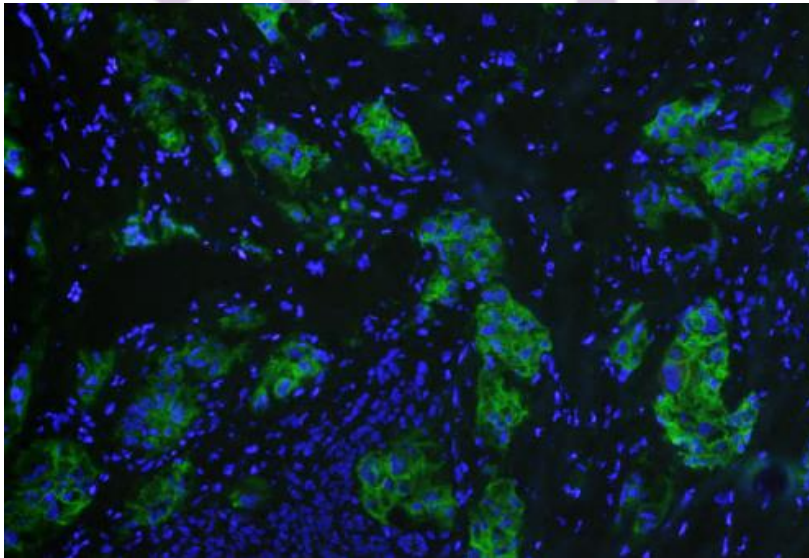
HER2 is a member of the human epidermal growth factor receptor (HER/EGFR/ERBB) family. Amplification or over-expression of this oncogene has been shown to play an important role in the development and progression of certain aggressive types of breast cancer. In recent years the protein has become an important biomarker and target of therapy for approximately 30% of breast cancer patients.

Supplied in 10 mM sodium HEPES (pH 7.5), 150 mM NaCl, 100 µg/ml BSA and 50% glycerol. Store at -20°C. After receiving aliquot the antibody and store at -20°C.

Terms and conditions

Guarantee only valid for products bought direct from PADZA or one of our authorized distributors

References:



Note: This product has originally been developed at Avicenna Research Institute, Tehran, IRAN and assigned to PADZA Company according to contract 98/15/191dated 98/01/10.