

Product Datasheet



Mouse Anti- Human kallikrein-3, PSA (KLK3)



Overview

Product number	PDZMM133
Host species	Mouse
Target species	Human
Suitable for:	IHC-P, WB, ELISA, Immunomicroscopy, Dot blot, ICC, IHC-Fr

Immunogen	A KLH-conjugated synthetic peptide derived from human kallikrein-3 (KLK3) protein was used for immunization.
Conjugation	Unconjugated
Properties	
Form	Liquid
Storage instructions	Shipped at 4 °C. Store at -20 °C. Avoid freeze/thaw cycle. Please see notes section.
Storage buffer	Phosphate buffered saline pH 7.4, contains stabilizer and ≤0.09% sodium azide.
Purity	immunogen affinity or SpG purified
Purification notes	This product was prepared by immunoaffinity chromatography using immunogen peptide coupled to Sepharose 4B.
Conjugation notes	-
Clonality	Monoclonal
Isotype	IgG
General notes	For extended storage aliquot contents and freeze at -20 °C or below. Centrifuge product if not completely clear after standing at room temperature. This product is stable for several weeks at 4 °C as an undiluted liquid. Dilute only prior to immediate use. Our customer's feedback says the antibody worked great. In case the antibody fails to give results then please contact our scientific support team for assistance.

Applications

The application notes include recommended starting dilutions; optimal dilutions/concentrations should be determined by the end-user.

Product Usage Information:

Application Dilutions

Western Blotting	3-5 ug/ml
Immunohistochemistry (Paraffin)	5-10 ug/ml
Immunohistochemistry (Frozen)	5-10 ug/ml
Immunofluorescence	5-10 ug/ml
Flow Cytometry	5-10 ug/ml

Please note: All products are "FOR RESEARCH USE ONLY. NOT FOR USE IN DIAGNOSTIC PROCEDURES"

Background:

Prostate-specific antigen (PSA), also known as gamma-seminoprotein or kallikrein-3 (KLK3), is a glycoprotein enzyme encoded in humans by the KLK3 gene. PSA is a member of the kallikrein-related peptidase family and is secreted by the epithelial cells of the prostate gland.

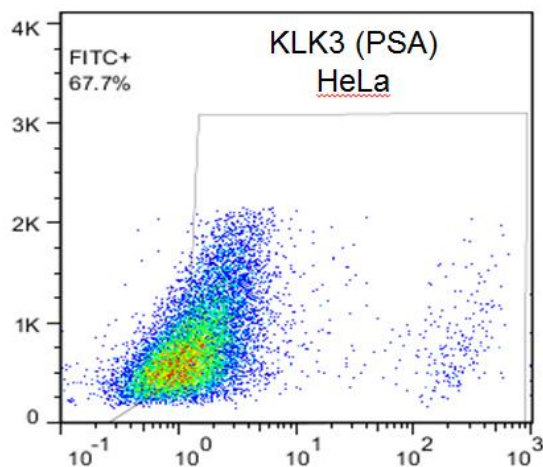
PSA is produced for the ejaculate, where it liquefies semen in the seminal coagulum and allows sperm to swim freely. It is also believed to be instrumental in dissolving cervical mucus, allowing the entry of sperm into the uterus.

PSA is present in small quantities in the serum of men with healthy prostates, but is often elevated in the presence of prostate cancer or other prostate disorders. PSA is not uniquely an indicator of prostate cancer, but may also detect prostatitis or benign prostatic hyperplasia.

Terms and conditions

Guarantee only valid for products bought direct from PADZA or one of our authorized distributors

References:



Note: This product has originally been developed at Avicenna Research Institute, Tehran, IRAN and assigned to PADZA Company according to contract 98/15/191 dated 98/01/10.