

## Product Datasheet



### Mouse Anti-Human Ror1

#### Overview

<b>Product number</b>	<b>PDZMM119</b>
<b>Host species</b>	Mouse
<b>Target species</b>	Human
<b>Suitable for:</b>	IHC-P, WB, ELISA, Immunomicroscopy, Dot blot, ICC, IHC-Fr

<b>Immunogen</b>	A KLH-conjugated synthetic peptide derived from human Ror1 protein was used for immunization.
<b>Conjugation</b>	Unconjugated
<b>Properties</b>	
<b>Form</b>	Liquid
<b>Storage instructions</b>	Shipped at 4 °C. Store at -20 °C. Avoid freeze/thaw cycle. Please see notes section.
<b>Storage buffer</b>	Phosphate buffered saline pH 7.4, contains stabilizer and $\leq 0.09\%$ sodium azide.
<b>Purity</b>	immunogen affinity or SpG purified
<b>Purification notes</b>	This product was prepared by immunoaffinity chromatography using immunogen peptide coupled to Sepharose 4B.
<b>Conjugation notes</b>	-
<b>Clonality</b>	Monoclonal
<b>Isotype</b>	IgG
<b>General notes</b>	<p>For extended storage aliquot contents and freeze at -20 °C or below. Centrifuge product if not completely clear after standing at room temperature. This product is stable for several weeks at 4 °C as an undiluted liquid. Dilute only prior to immediate use.</p> <p>Our customer's feedback says the antibody worked great. In case the antibody fails to give results then please contact our scientific support team for assistance.</p>

## Applications

The application notes include recommended starting dilutions; optimal dilutions/concentrations should be determined by the end-user.

### Product Usage Information:

#### Application Dilutions

Western Blotting	3-5 ug/ml
Immunohistochemistry (Paraffin)	5-10 ug/ml
Immunohistochemistry (Frozen)	5-10 ug/ml
Immunofluorescence	5-10 ug/ml
Flow Cytometry	5-10 ug/ml

**Please note:** All products are "FOR RESEARCH USE ONLY. NOT FOR USE IN DIAGNOSTIC PROCEDURES"

#### Background:

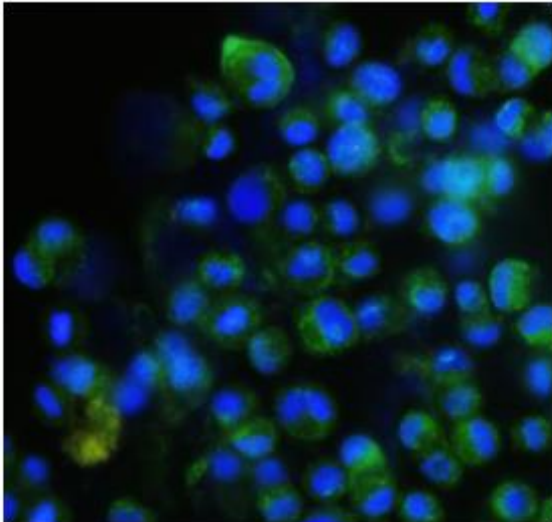
Tyrosine-protein kinase transmembrane receptor ROR1, also known as neurotrophic tyrosine kinase, receptor-related 1 (NTRKR1), is an enzyme that in humans is encoded by the ROR1 gene.[5][6][7] ROR1 is a member of the receptor tyrosine kinase-like orphan receptor (ROR) family.

Supplied in 10 mM sodium HEPES (pH 7.5), 150 mM NaCl, 100 µg/ml BSA and 50% glycerol. Store at -20°C. After receiving aliquot the antibody and store at -20°C.

#### Terms and conditions

Guarantee only valid for products bought direct from PADZA or one of our authorized distributors

#### References:



Human breast cancer (SKBR3)

Note: This product has originally been developed at Avicenna Research Institute, Tehran, IRAN and assigned to PADZA Company according to contract 98/15/191dated 98/01/10.