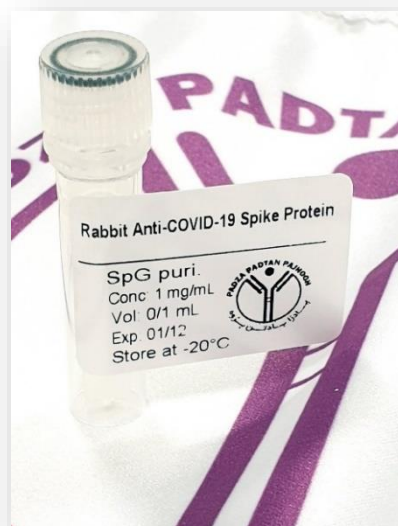


Product Datasheet



Rabbit Anti-COVID-19 Spike Protein

Overview

Product number	PDZRP101
Host species	Rabbit
Target species	COVID-19
Suitable for:	IHC-P, WB, ELISA, Immunomicroscopy, Dot blot, ICC, IHC-Fr
Immunogen	A peptide derived from COVID-19 Spike protein

Conjugation -

Properties

Form Liquid

Storage instructions Shipped at 4 °C. Store at -20 °C. Avoid freeze/thaw cycle.

Storage buffer Phosphate buffered saline pH 7.4, contains stabilizer and $\leq 0.09\%$ sodium azide.

Purity SpG purified

Purification notes This product was prepared from monospecific antiserum by immunoaffinity chromatography using protein coupled to Sepharose 4B.

Conjugation notes

Clonality Polyclonal

Isotype IgG

General notes

For extended storage aliquot contents and freeze at -20 °C or below. Centrifuge product if not completely clear after standing at room temperature. This product is stable for several weeks at 4 °C as an undiluted liquid. Dilute only prior to immediate use.

Applications

The application notes include recommended starting dilutions; optimal dilutions/concentrations should be determined by the end-user.

ELISA	It is recommended that the reagent be titrated for optimal performance for each application.
Immunomicroscopy	“
Dot blot	“
ICC	“
IHC-Fr	“

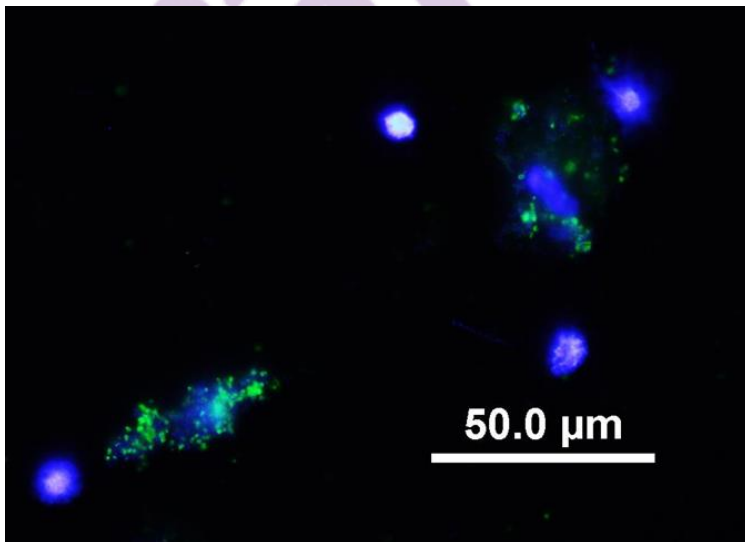
Please note: All products are "FOR RESEARCH USE ONLY. NOT FOR USE IN DIAGNOSTIC PROCEDURES"

Replacement or refund for products not performing as stated on the datasheet. Valid for 12 months from date of delivery.

Please visit <https://www.padzaco.com> or contact our technical team.

Terms and conditions

Guarantee only valid for products bought direct from PADZA or one of our authorized distributors



Immunofluorescence assay. A COVID-19 infected cell was stained using 2 ug of rabbit anti-spike protein polyclonal antibody as primary antibody. Goat anti-Rabbit IgG coupled to FITC was used as secondary antibody.